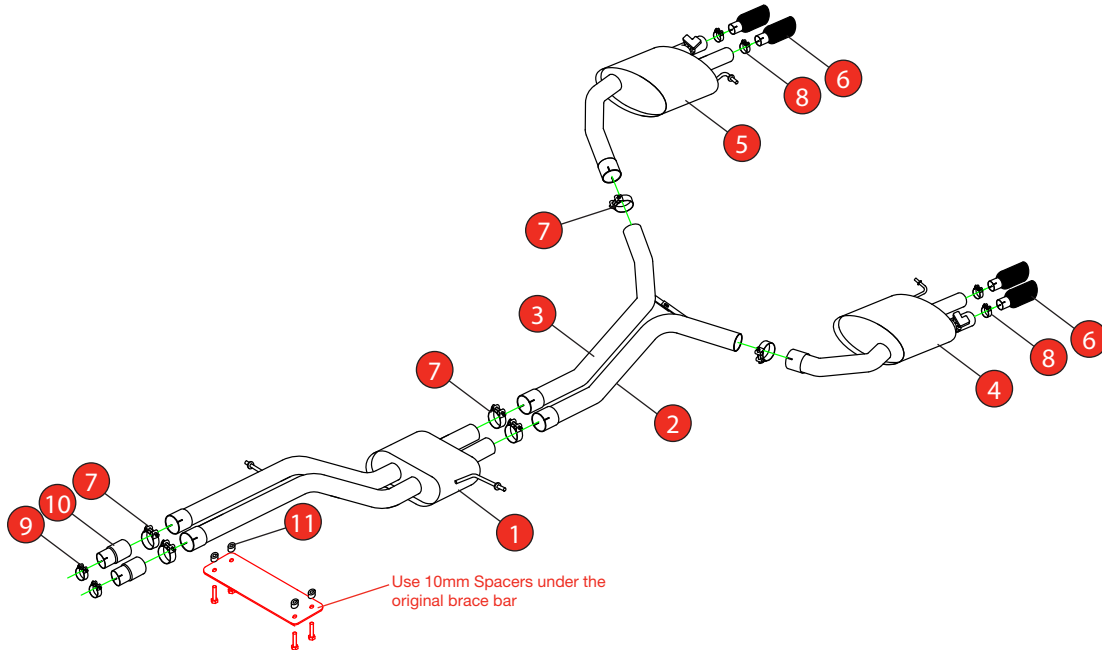


Car	Audi S4 B9 Quattro Avant, Sallou, Sedan	Part No.	SAU088CF
Year	2017-2019	Fit Kits	345FK
Notes	Where not supplied use original fittings	Features	Pipe Diameter:- 63.5mm

Estimated Fitting Time: 90 Minutes



NO.	PART NO.	DESCRIPTION	QTY
1	770AU	Resonated Centre Section	1
2	772AU	L/H Rear Link Pipe	1
3	773AU	R/H Rear Link Pipe	1
4	774AU	L/H Rear Silencer	1
5	775AU	R/H Rear Silencer	1
6	Z023.10159	Ø100mm Carbon Fibre Askari Trim	4
Fit Kit			
7	Z016.10070	66mm H/D Clamp	6
8	Z016.10064	63-68mm Clamp	4
9	Z016.10001	59-63mm Clamp	2
10	AD29	Adaptor (to fit to O.E system)	2
11	Z026.20161	M10 x 10mm Alloy Spacer	4
12	Z017.10049	M8 x 30mm Hex Head Bolt (see photo instructions on the following page)	1
13	Z017.10062	M8 Nyloc Nut (see photo instructions on the following page)	1
14	Z017.10825	M8 x 25mm Washer (see photo instructions on the following page)	2

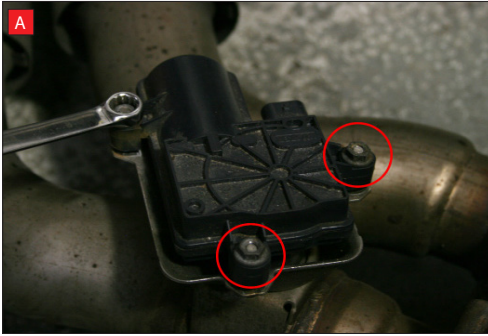
E-MARK	N/A
DATE	27/07/20
ISSUE	00
AUTHORISED	M.Ydlibi

NOTE: ENSURE SCORPION SYSTEM IS CLEAR OF MOVING PARTS AND ALL ORIGINAL FUNCTIONS



STAY CONNECTED TO RED POWER.

Car	Audi S4 B9 Quattro Avant, Sallon, Sedan	Part No.	SAU088CF
Year	2017-2019	Fit Kits	345FK
Notes	Where not supplied use original fittings	Features	Pipe Diameter:- 63.5mm



A) After you have removed O.E exhaust you will need to swap the valve motors to the Scorpion exhaust. Remove the 6 nuts

B) Lift up the motor. You will now be able to see the torsion spring (This must stay on the electronic valve motor to work with Scorpion Exhaust).

C) Rotate Scorpion valve so it aligns with the torsion spring.

D) Now fit the O.E electronic valve motor ensuring the spring seats correctly to the lugs of the valve.

E) Using the 6 O.E nuts secure in place.

F) With the exhausts system off the car the electronic valve cable above the left hand rear silencer needs to be un-clipped. Once the Scorpion system is fitted and the cable is plugged in ensure the cable is fastened clear of the exhaust.

G) Once the Scorpion system is fitted uses items 12, 13 and 14 to secure the pipework together.

Once happy with fitment of Scorpion Exhaust, fully tighten up all clamps and fixing and plug in the electronic valve motors.

